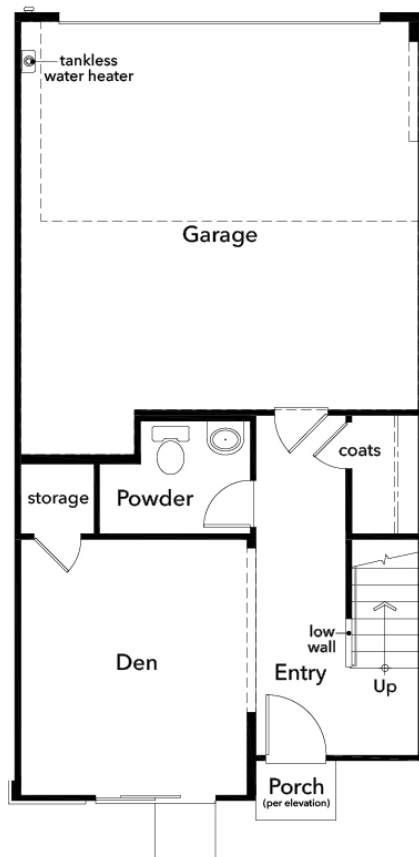


CRIMSON

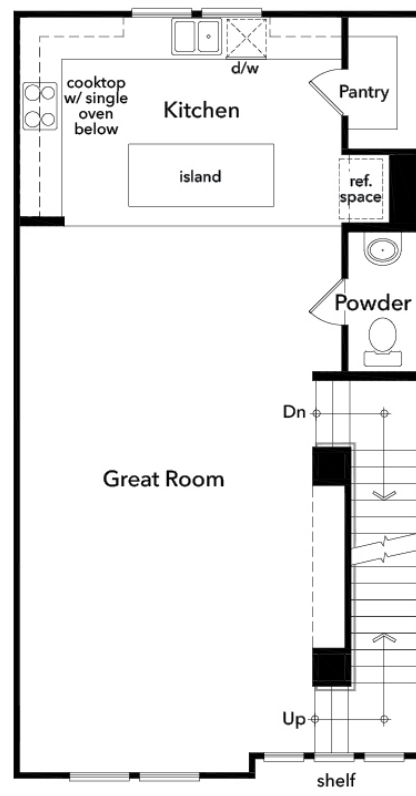
KB HOME

Plan 1866

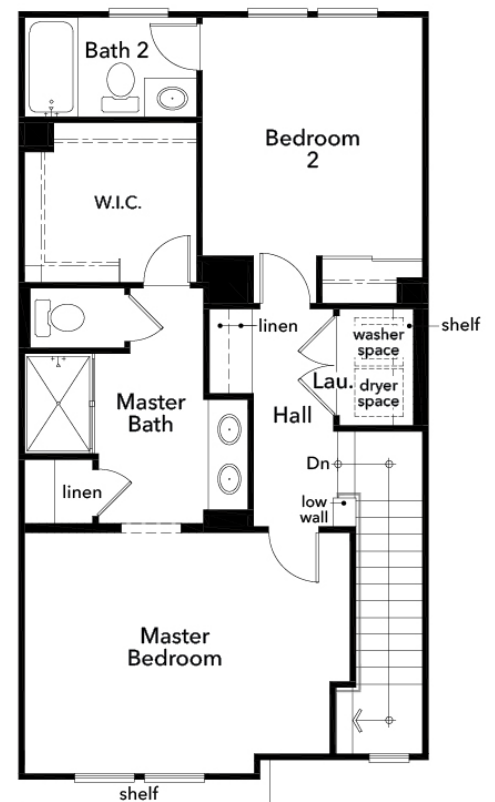
Approx. 1,866 sq. ft. | 3-Story | 2-3 Beds | 3-3.5 Baths | 2-Bay Garage



First Floor



Second Floor



Third Floor



KBhome.com

Valencia™
FIVEPOINT.

©2021 KB Home. All rights reserved. KB Home reserves the right to change floor plan specifications, prices, financing, terms and availability without prior notice and may vary by neighborhood, homesite location and home series. Special wall and window treatments, custom paint colors, photographs, upgraded floor coverings, furniture, landscaping, custom designed walks and patio treatments and many other items featured in and around the model homes are decorator suggested, are not included in the purchase price and are not available for purchase from KB Home. Windows, columns, porches, steps and posts may vary per elevation and predetermined homesite. Renderings and floor plans are artist conception; square footage is approximate and based upon design; area may vary according to construction; landscaping shown is not standard. See options and upgrades offered at KB Home Studio. All options/upgrades may require additional charges, may require ordering at predetermined stages of construction and are subject to change/discontinuation anytime by KB Home. See sales representative for details. Equal Housing Opportunity. (10/21)